

THE ATLANTIC BLUEFIN TUNA: THE PATH TO AN AMAZING RECOVERY

- Estimated amount of adults
- Allowed catches
- Declared catches
- Estimated illegal catches

Continuing population increase
873,353 t in 2018



2007
The ICCAT strategic recovery plan is implemented

2008 /
Restrictive bans and stricter control of illegal fishing

2003 /
High larval survival rate in warm years helps future recovery



2007
Weight limit set at
30 kg



2012 /
Counting systems are improved and enforced in tuna fattening farms



NGO pressure:
Public opinion puts the focus on overfishing

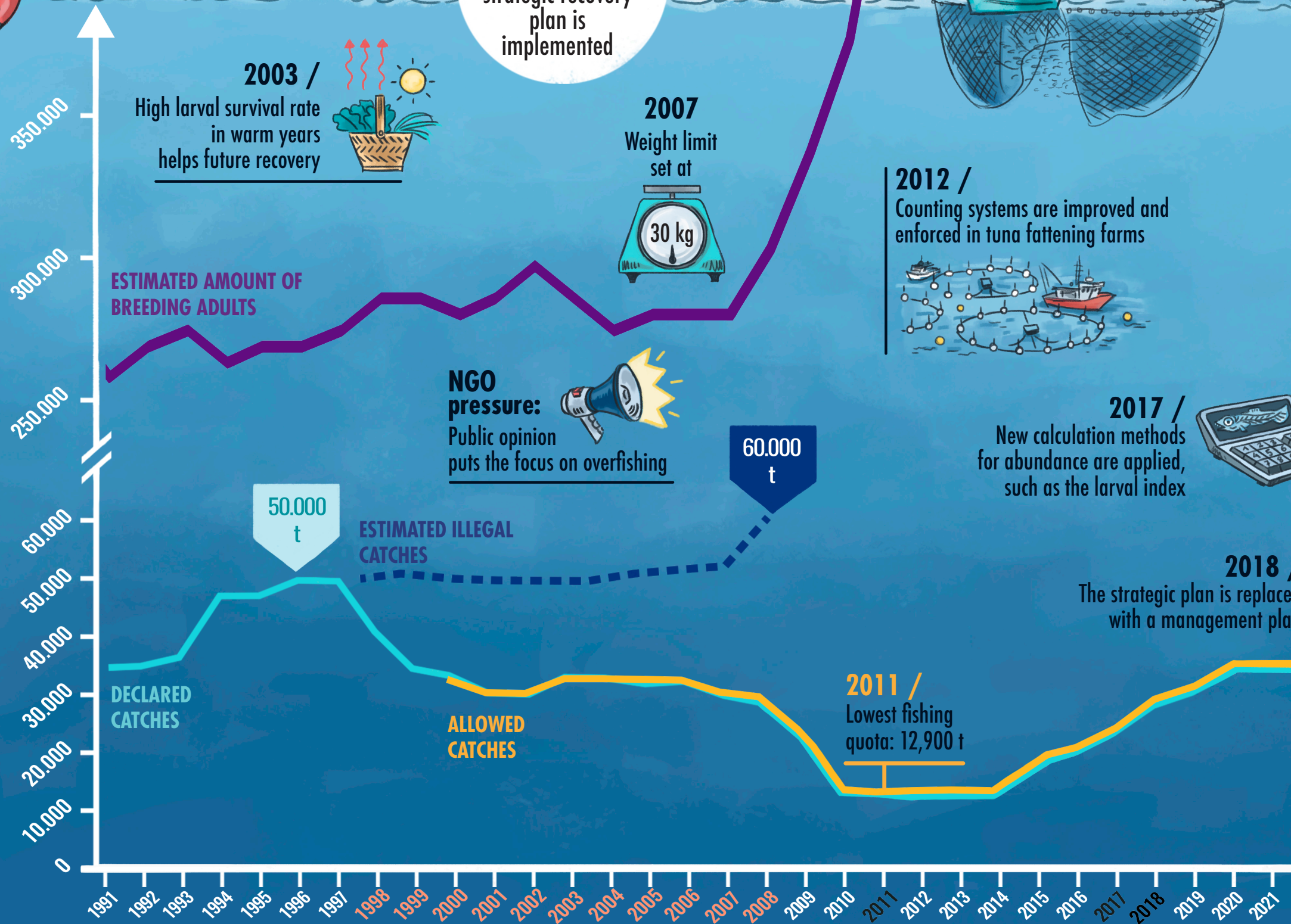


2017 /
New calculation methods for abundance are applied, such as the larval index



2018 /
The strategic plan is replaced with a management plan

TONS (T) OF ATLANTIC BLUEFIN TUNA



Data provided by ICCAT Secretariat

critical years

YEARS

Illustration of Flavia Gargiulo for Planet Tuna